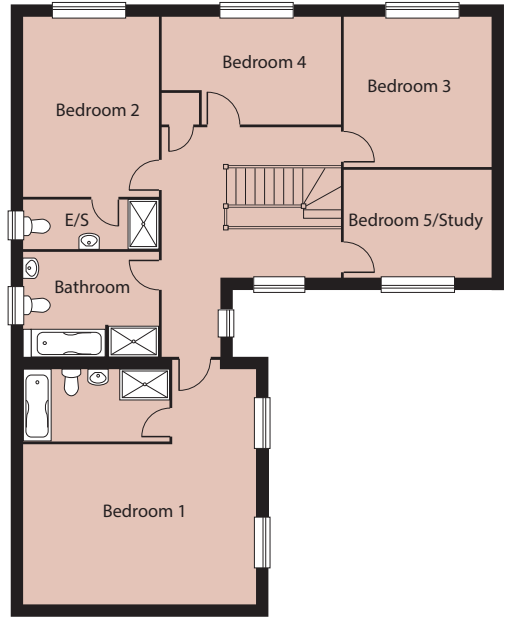


Ground Floor

Lounge	6200mm x 3450mm	20'4" x 11'4"
Dining	3500mm x 3200mm	11'6" x 10'6"
Family area	2700mm x 4350mm	8'10" x 14'3"
Kitchen	3750mm x 4350mm	12'4" x 14'3"
Utility	1550mm x 4350mm	5'1" x 14'3"
Cloaks	1850mm x 1150mm	6'1" x 3'9"



Upper Floor

Bed 1	5500mm x 5800mm	18'0" x 19'0"
En Suite	3500mm x 1700mm	11'6" x 5'7"
Bed 2	4250mm x 3200mm	13'11" x 10'6"
En Suite	3200mm x 1200mm	10'6" x 3'11"
Bed 3	3500mm x 3550mm	11'6" x 11'8"
Bed 4	4300mm x 2550mm	14'1" x 8'4"
Bed 5/Study	3500mm x 2550mm	11'6" x 8'4"
Bathroom	3200mm x 2500mm	10'6" x 8'2"